

Composite Endpoint Analysis Report

Missing Data Matters

2017-04-17

Contents

Data Summary	2
Analysis Summary	2
Missingness Summary	3
Survival	3
Imputation Result	4
Imputed Outcomes	4
Imputed Endpoint	5
Composite Quantile	5
Bootstrap Results	6
Hypothesis Testing	6
Median	6
Contour plot	6

Data Summary

```
##          AGE          TRT          SURV          Y2
## Min.      :18.06   Min.      :0.0000   Min.      :  1.0   Min.      :17.00
## 1st Qu.:55.52   1st Qu.:0.0000   1st Qu.: 14.5   1st Qu.:37.00
## Median :66.23   Median :0.0000   Median :365.0   Median :41.00
## Mean     :63.72   Mean     :0.4973   Mean     :519.5   Mean     :40.86
## 3rd Qu.:75.39   3rd Qu.:1.0000   3rd Qu.:999.0   3rd Qu.:47.00
## Max.     :90.29   Max.     :1.0000   Max.     :999.0   Max.     :53.00
##                                     NA's      :136
##
##          Y1
## Min.      :12.0
## 1st Qu.:35.0
## Median :39.5
## Mean     :38.7
## 3rd Qu.:45.0
## Max.     :54.0
## NA's      :111
```

Analysis Summary

The basic settings of the analysis are as follows:

```
## $endfml
## [1] "Y2"
##
## $duration
## [1] 365
##
## $bounds
## [1]  0 100
##
## $mindiff
## [1] 0 0
##
## $trt
## [1] "TRT"
##
## $surv
## [1] "SURV"
##
## $outcome
## [1] "Y1" "Y2"
##
## $y0
## NULL
##
## $cov
## [1] "AGE"
##
## $endp
## [1] "Y2"
```

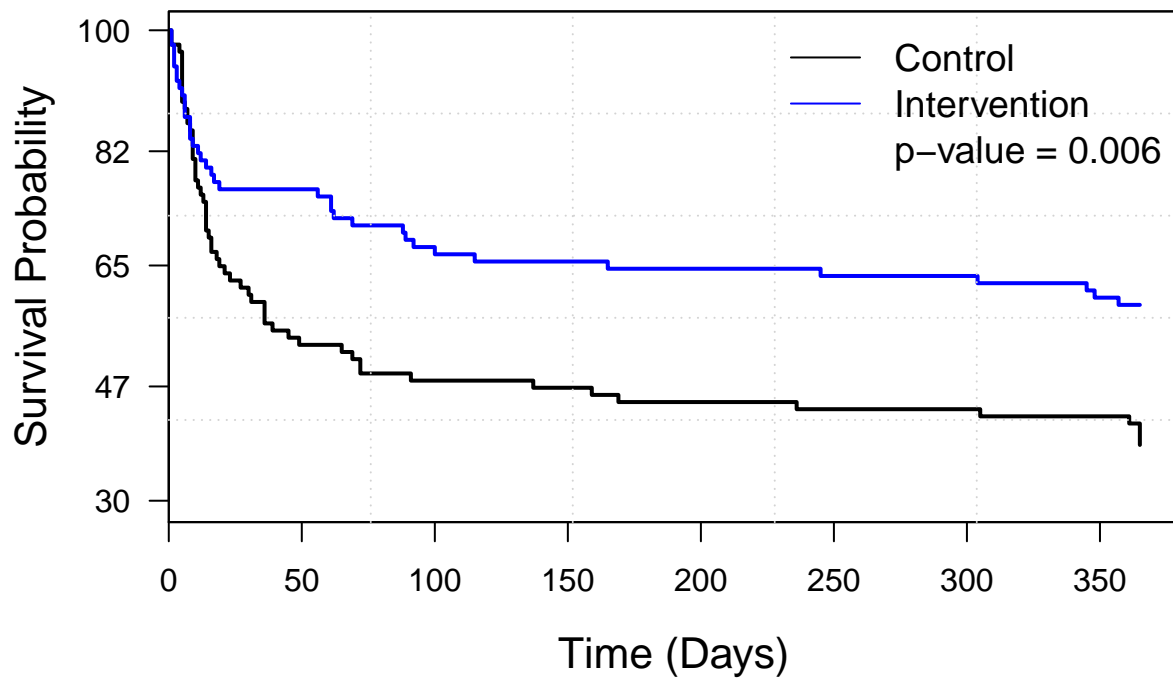
```
##
## $unitTime
## [1] "Days"
##
## $parsed.endfml
## expression(with(d.frame, { Y2 })))
```

Missingness Summary

	Y1	Y2	Control	Intervention
Deaths on study			58 (62%)	38 (41%)
S=1	Observed	Observed	18 (19%)	32 (34%)
S=2	Observed	Missing	8 (9%)	8 (9%)
S=3	Missing	Observed	1 (1%)	0 (0%)
S=4	Missing	Missing	9 (10%)	15 (16%)
Total			94	93

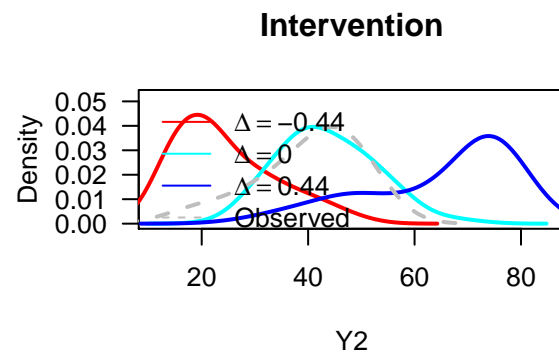
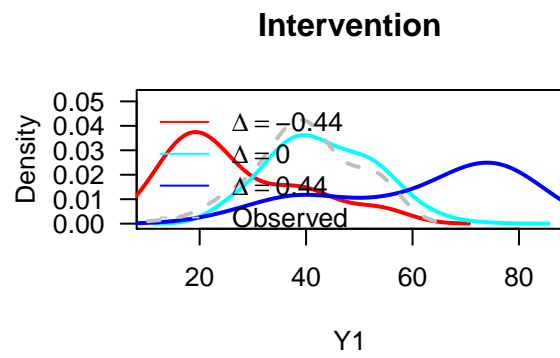
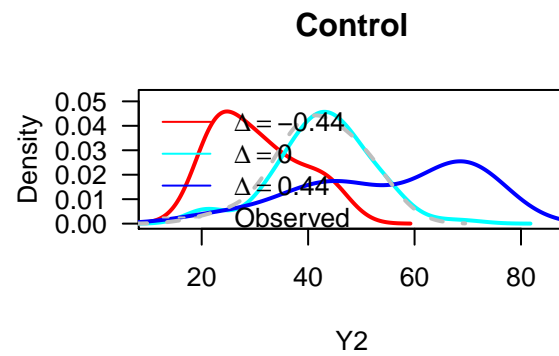
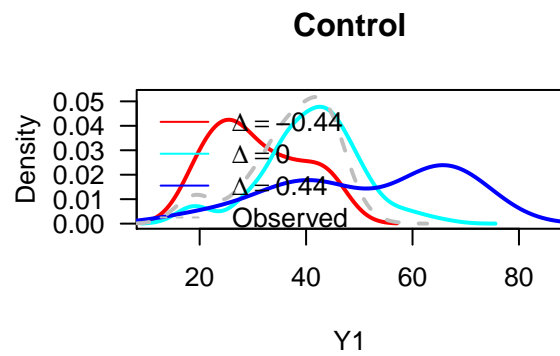
Survival

Survival Curves

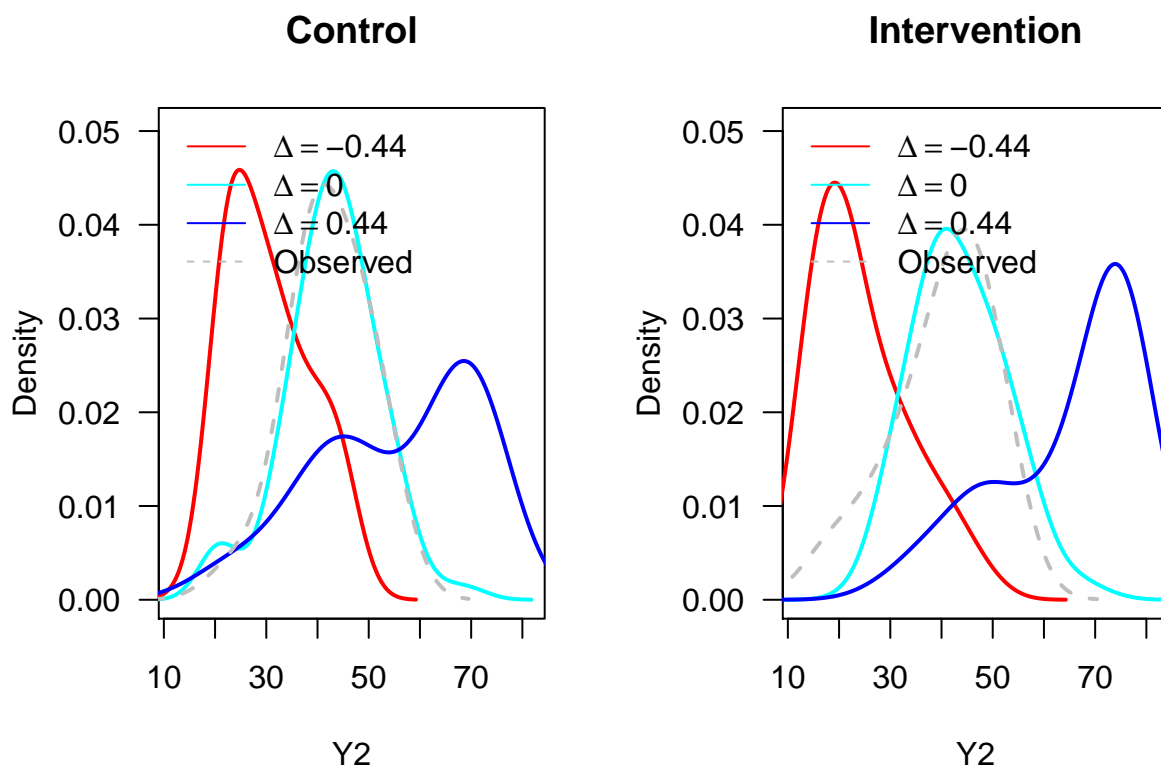


Imputation Result

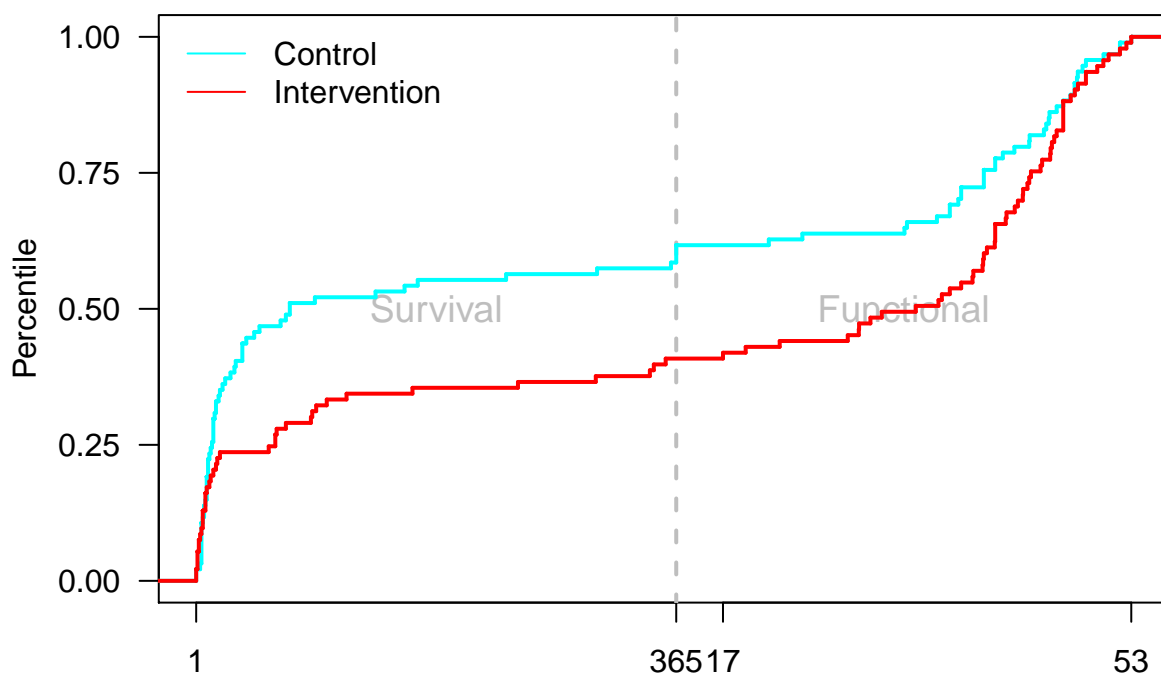
Imputed Outcomes



Imputed Endpoint



Composite Quantile



Bootstrap Results

Hypothesis Testing

	Delta0	Delta1	Theta	SD	PValue
1	-0.25	-0.25	-0.16		
2	0.00	-0.25	-0.12		
3	0.25	-0.25	-0.09		
4	-0.25	0.00	-0.24		
5	0.00	0.00	-0.20	0.03	0.00
6	0.25	0.00	-0.15		
7	-0.25	0.25	-0.29		
8	0.00	0.25	-0.26		
9	0.25	0.25	-0.22		

Median

	Delta	TRT	Q	Quant	LB	UB
1	-0.25	0.00	0.50	-9928.00		
2	-0.25	1.00	0.50	22.18		
3	0.00	0.00	0.50	-9928.00	-9928.00	-9928.00
4	0.00	1.00	0.50	30.00	27.90	33.64
5	0.25	0.00	0.50	-9928.00		
6	0.25	1.00	0.50	34.00		

Contour plot

```
## Warning in contour.default(alphas, alphas, rst, levels = con.v, labcex =
## 1.2, : all z values are equal
```

